

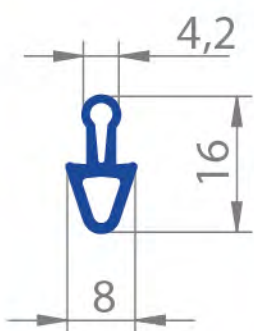


**ZAKŁAD  
BUDOWY MASZYN**  
I SYSTEMÓW STEROWANIA

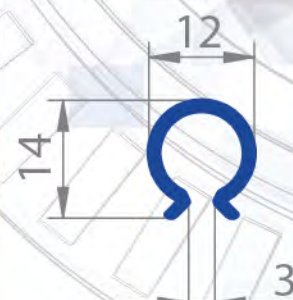
**KATALOG PROFILI**  
z tworzyw sztucznych



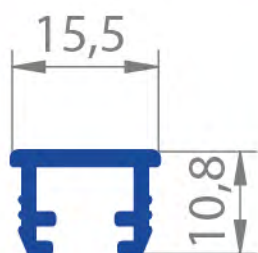
# PROFILE **TECHNICZNE**



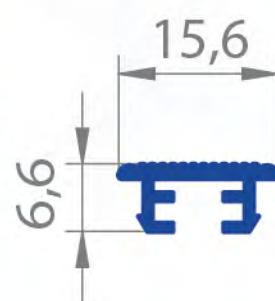
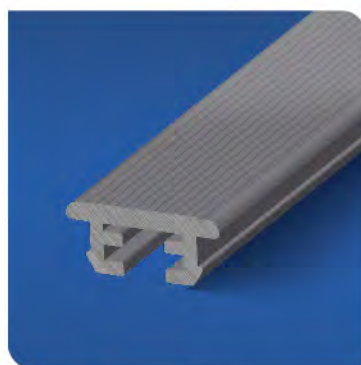
**Nr. PT-001** Mat. PVC



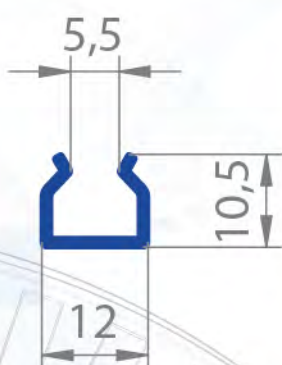
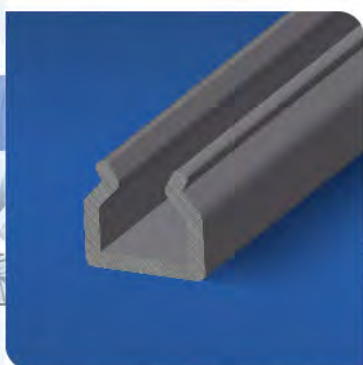
**Nr. PT-002** Mat. PVC



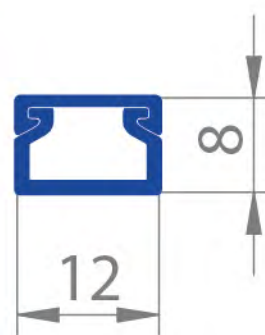
**Nr. PT-003** Mat. PVC, PMMA, PS



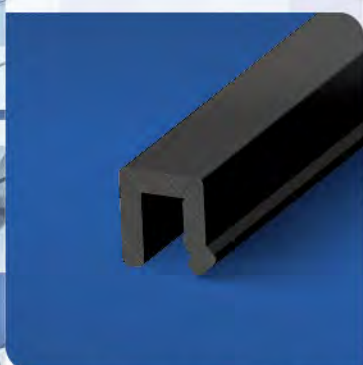
**Nr. PT-004** Mat. PVC, PMMA, PS



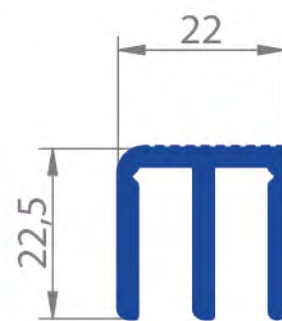
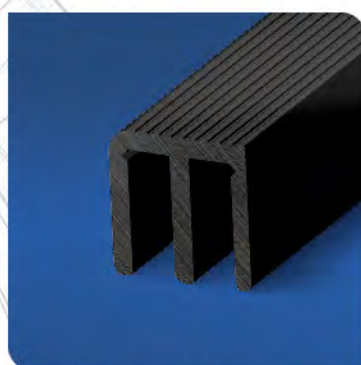
**Nr. PT-005** Mat. PVC



**Nr. PT-006** Mat. PVC



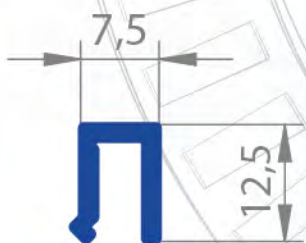
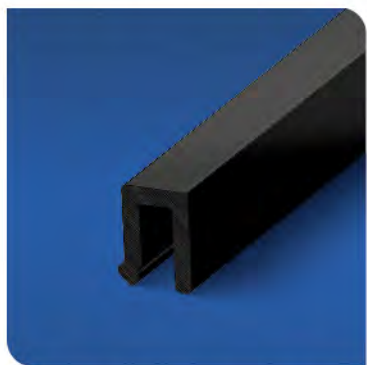
**Nr. PT-007** Mat. PVC



**Nr. PT-008** Mat. PVC



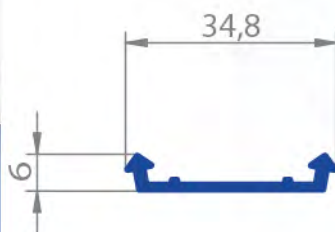
# PROFILE **TECHNICZNE**



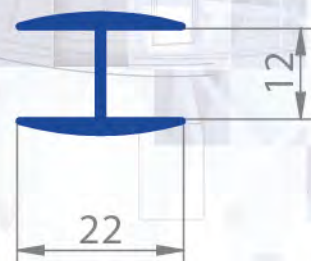
Nr. PT-009 Mat. PVC



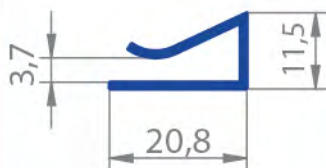
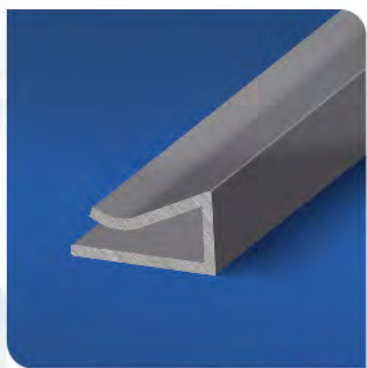
Nr. PT-010 Mat. HDPE, PE



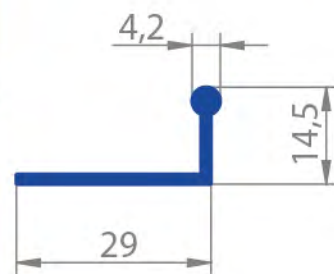
Nr. PT-011 Mat. PVC



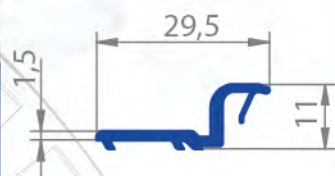
Nr. PT-012 Mat. PVC



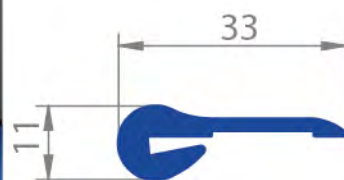
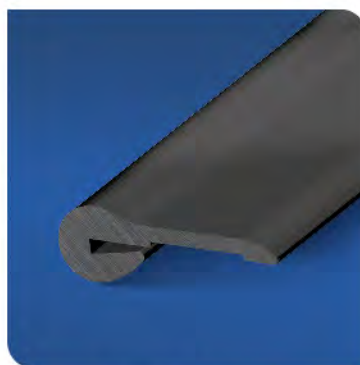
Nr. PT-013 Mat. PVC



Nr. PT-014 Mat. PVC



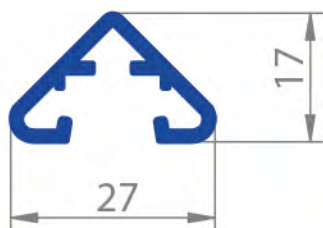
Nr. PT-015 Mat. PVC



Nr. PT-016 Mat. PVC m



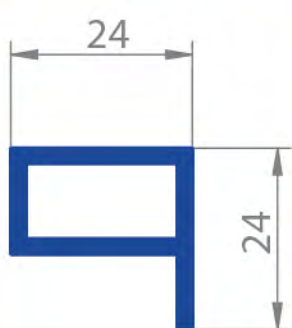
# PROFILE **TECHNICZNE**



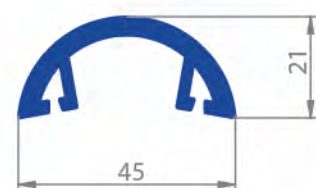
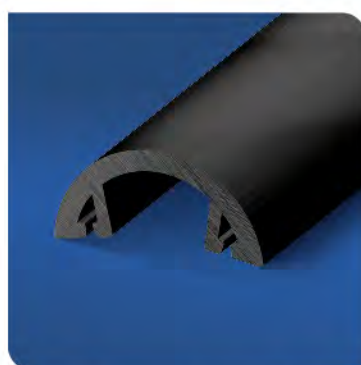
**Nr. PT-017** Mat. PVC



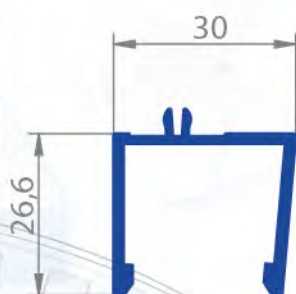
**Nr. PT-018** Mat. PVC+PVCm



**Nr. PT-019** Mat. PVC



**Nr. PT-020** Mat. PVC m



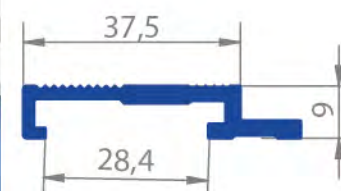
**Nr. PT-021** Mat. PVC



**Nr. PT-022** Mat. PVC



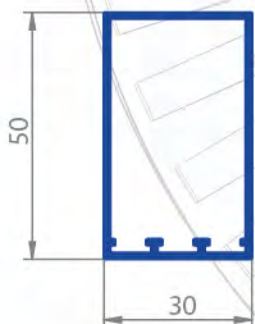
**Nr. PT-023** Mat. PVC



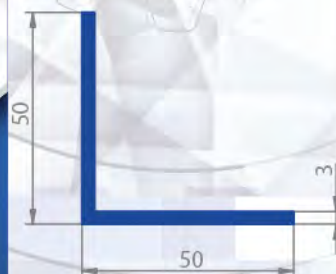
**Nr. PT-024** Mat. PVC



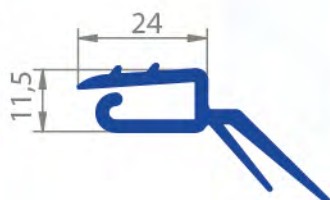
# PROFILE **TECHNICZNE**



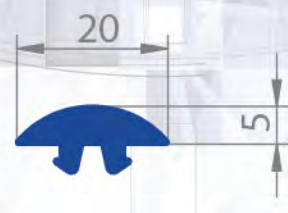
Nr. PT-025 Mat. PVC



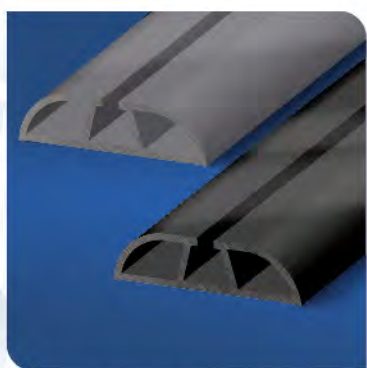
Nr. PT-026 Mat. PVC



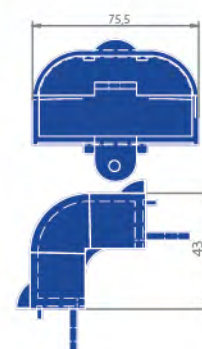
Nr. PT-027 Mat. PVC+PVCm



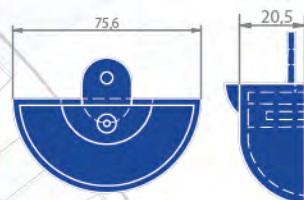
Nr. PT-028 Mat. PVCm



Nr. PT-029 Mat. PVC



Nr. PT-030 Mat. PVC



Nr. PT-031 Mat. PVC



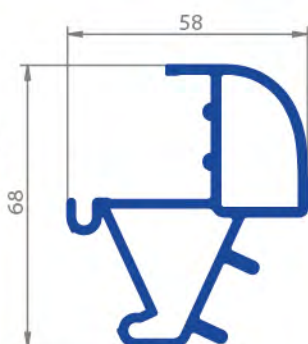
★ profil zastrzeżony



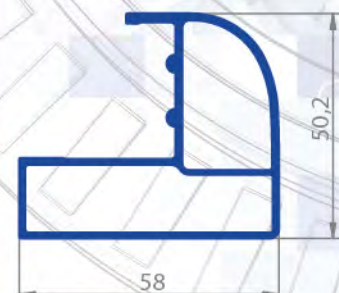
Nr. PT-032 Mat. PVC+PVCm



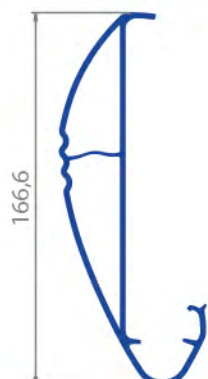
# PROFILE **TECHNICZNE**



**Nr. PT-033** Mat. PVC



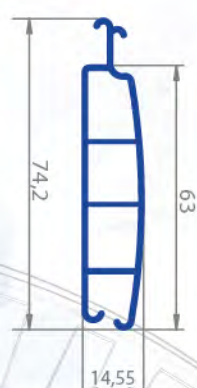
**Nr. PT-034** Mat. PVC



**Nr. PT-037** Mat. PVC



**Nr. PT-038** Mat. PVC



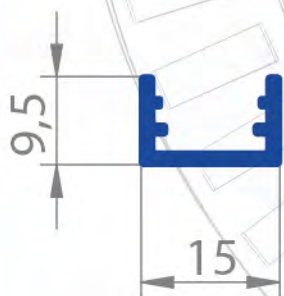
**Nr. PT-039** Mat. PVC



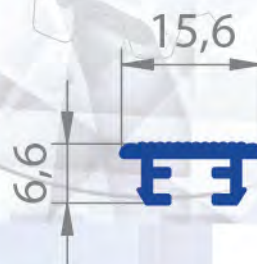
**Nr. PT-040** Mat. PVC



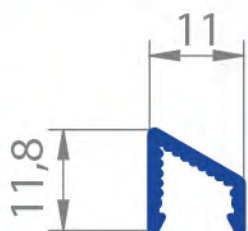
# PROFILE LEDOWE



Nr. PL-001 Mat. PS,PVC,PMMA



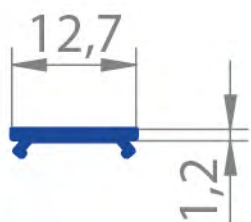
Nr. PL-002 Mat. PS,PMMA



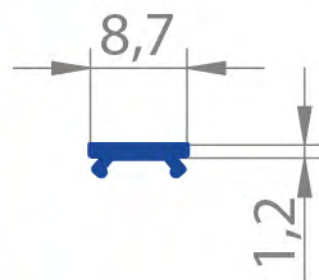
Nr. PL-003 Mat. PMMA



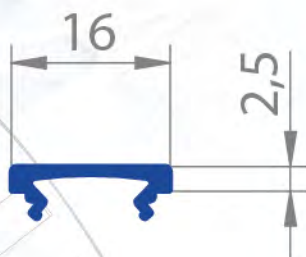
Nr. PL-004 Mat. PS



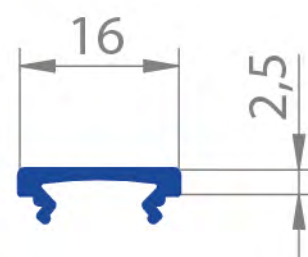
Nr. PL-005 Mat. PVC,PMMA



Nr. PL-006 Mat. PVC,PMMA



Nr. PL-007 Mat. PVC



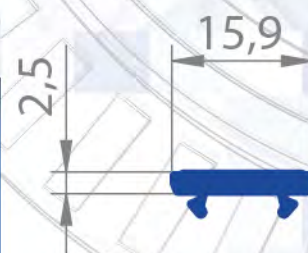
Nr. PL-008 Mat. PVC



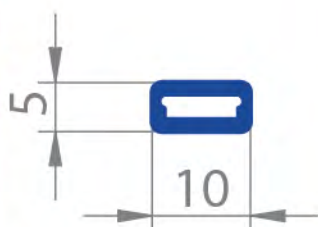
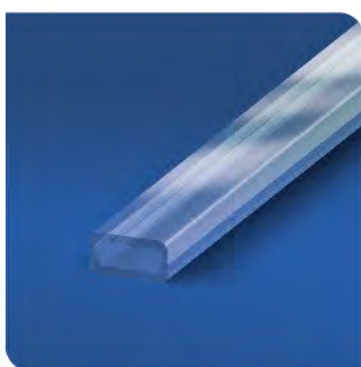
# PROFILE LEDOWE



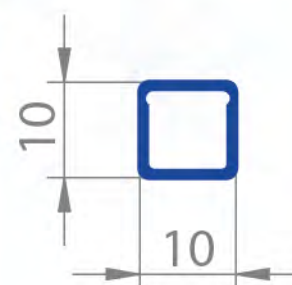
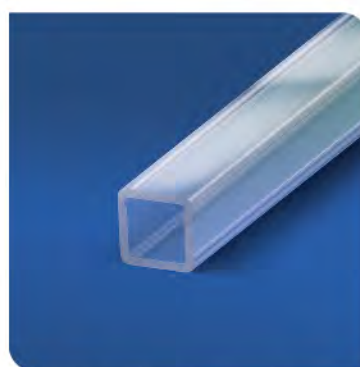
Nr. PL-009 Mat. PVC, PMMA



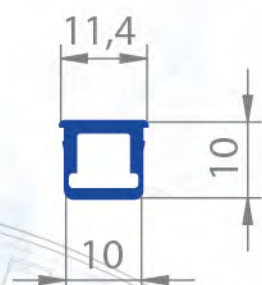
Nr. PL-010 Mat. PVC+PVCm



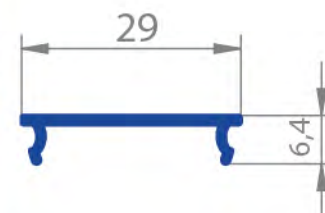
Nr. PL-011 Mat. PMMA



Nr. PT-012 Mat. PS, PMMA



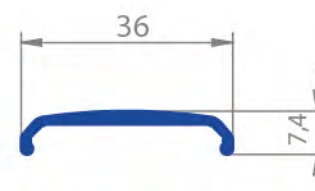
Nr. PL-013 Mat. PS, PMMA



Nr. PL-014 Mat. PVC, PMMA



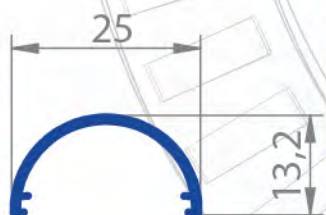
Nr. PL-015 Mat. PVC, PMMA



Nr. PL-016 Mat. PVC, PMMA



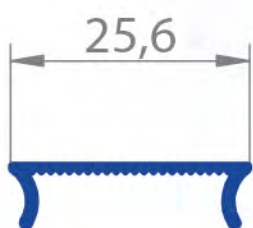
# PROFILE LEDOWE



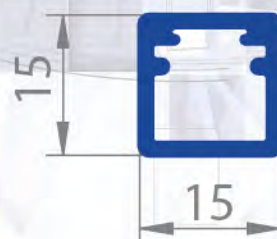
Nr. PL-017 Mat. PMMA



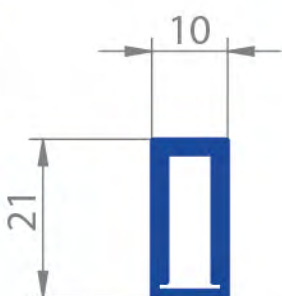
Nr. PL-018 Mat. PMMA



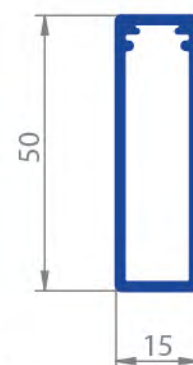
Nr. PL-019 Mat. PS, PMMA



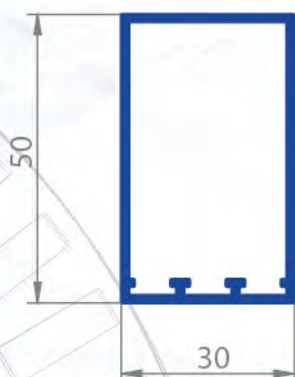
Nr. PL-020 Mat. PS, PMMA



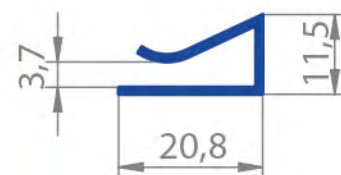
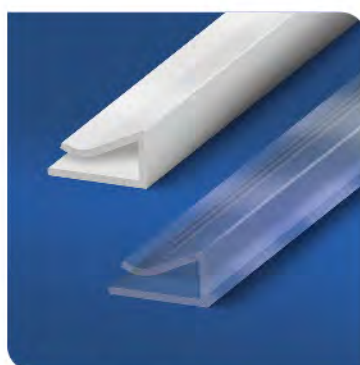
Nr. PL-021 Mat. PS



Nr. PL-022 Mat. PS



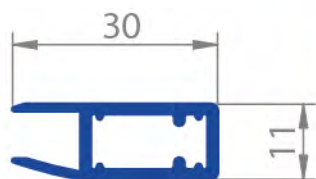
Nr. PL-023 Mat. PS



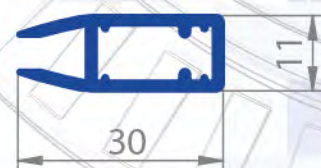
Nr. PL-024 Mat. PVC



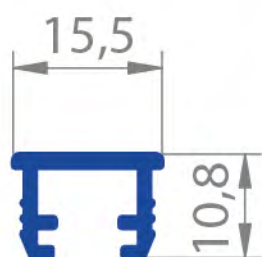
# PROFILE LEDOWE



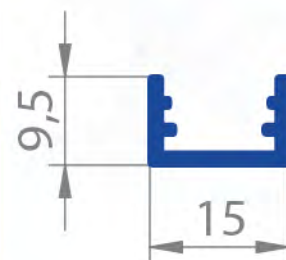
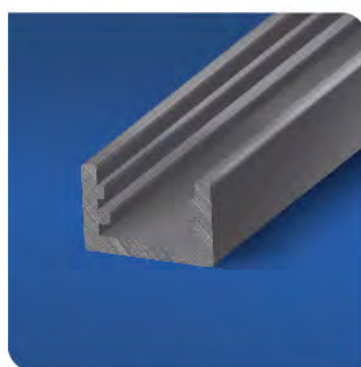
Nr. PL-025 Mat. PS



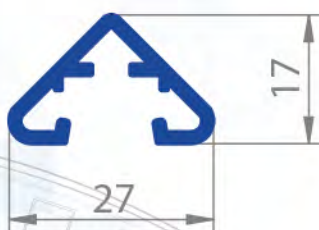
Nr. PL-026 Mat. PS



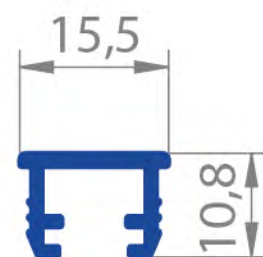
Nr. PL-027 Mat. PS,ABS



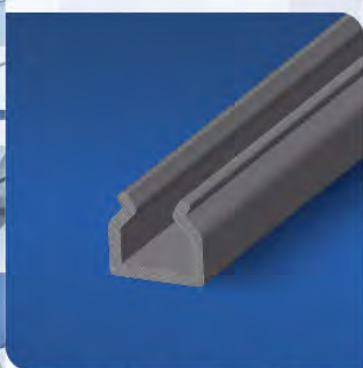
Nr. PL-028 Mat. PVC



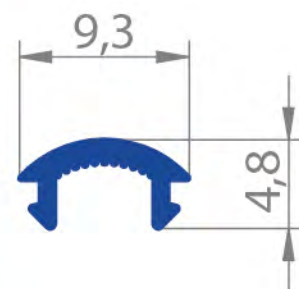
Nr. PL-029 Mat. PVC



Nr. PL-030 Mat. PS,PMMA,ABS



Nr. PL-031 Mat. PVC



Nr. PL-032 Mat. PMMA



# PROFILE **LEDOWE**



Nr. PL-033 Mat. PMMA

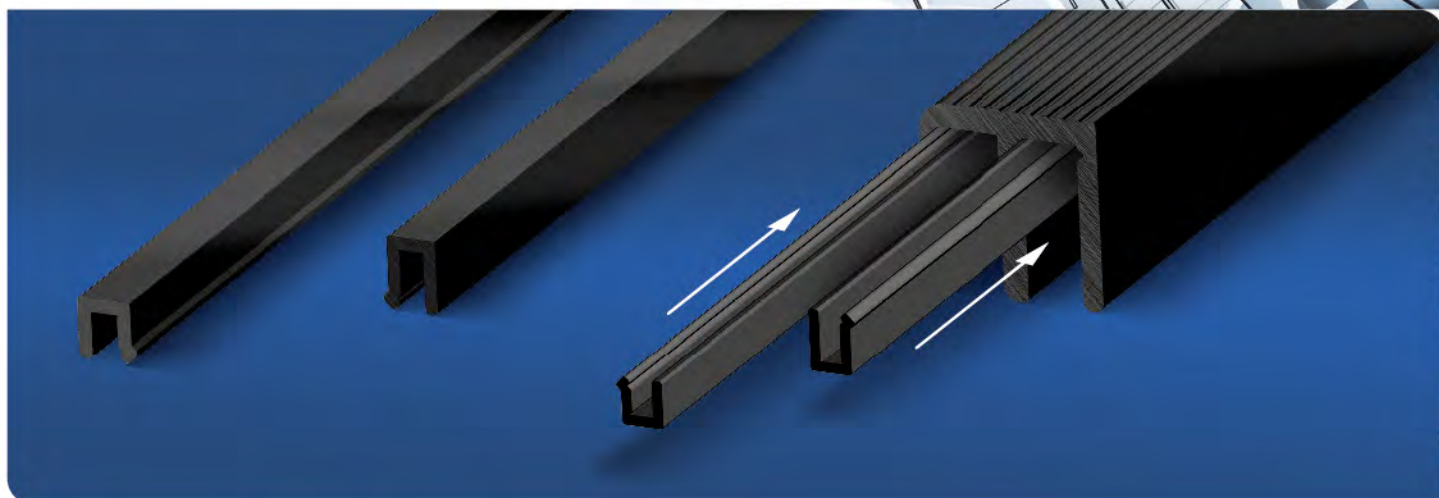


**ZAKŁAD  
BUDOWY MASZYN**  
I SYSTEMÓW STEROWANIA





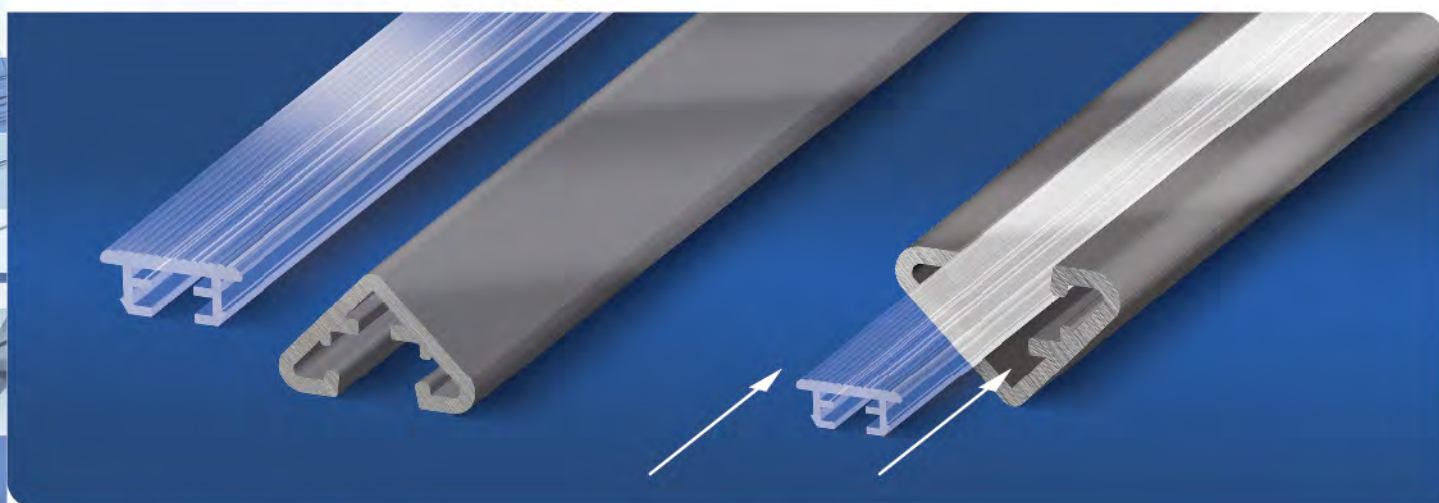
# RODZAJE POŁĄCZEŃ PROFILI



**PT008 + PT007 + PT009**



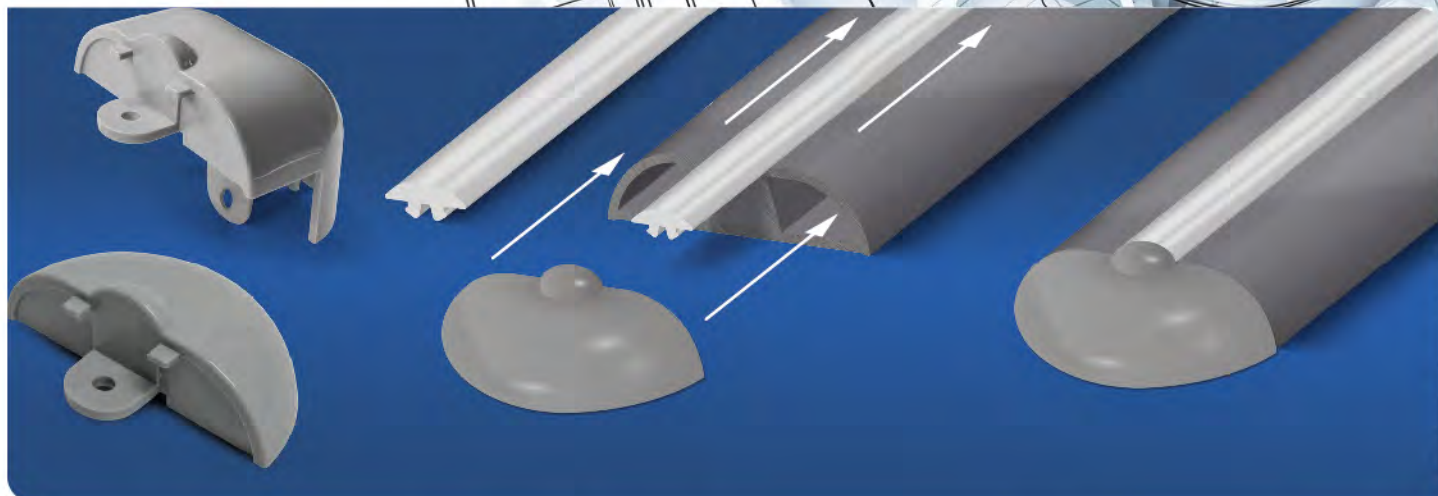
**PT-011 + PT-020**



**PT-017 + PL 002**



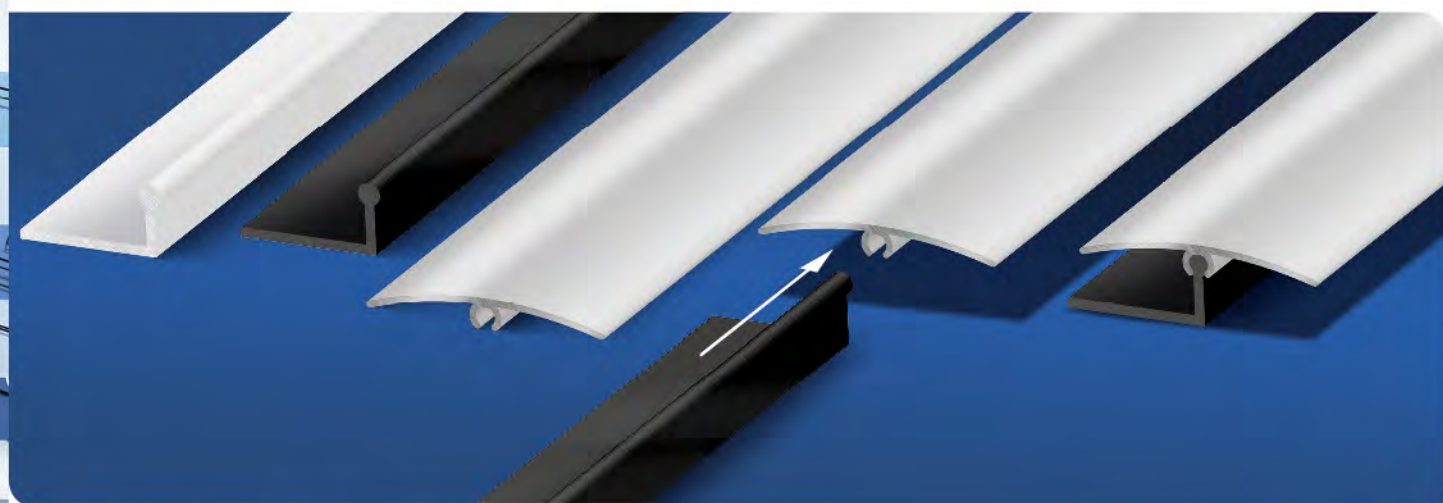
# RODZAJE POŁĄCZEŃ PROFILI



**PT-031 + PT-030 + PT-029 + PT-028**



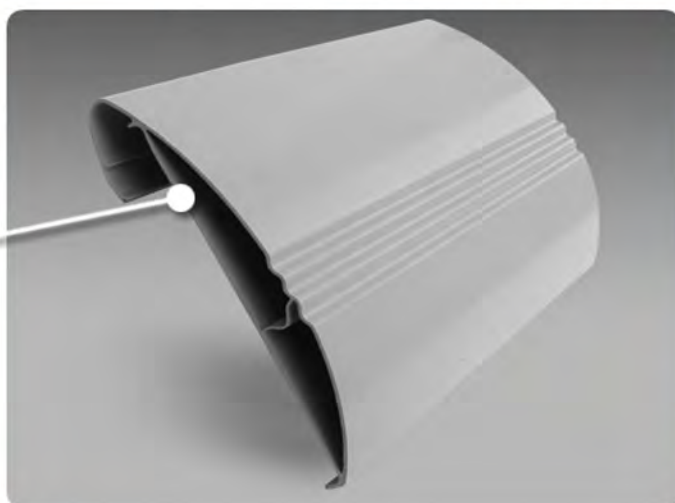
**PL-033 + Profil Aluminiowy**



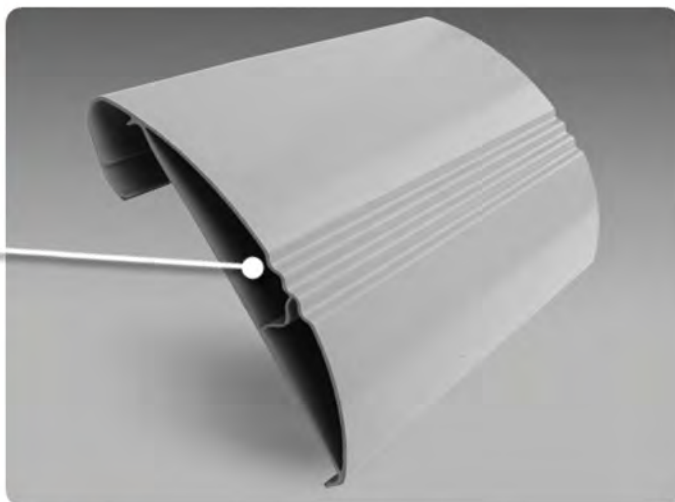
**PT-038 + PT 014**



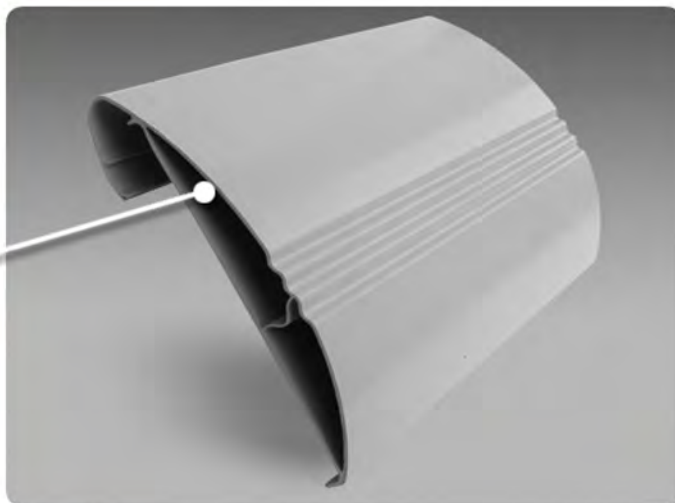
# ZASTOSOWANIE PROFILI



**PT-037**



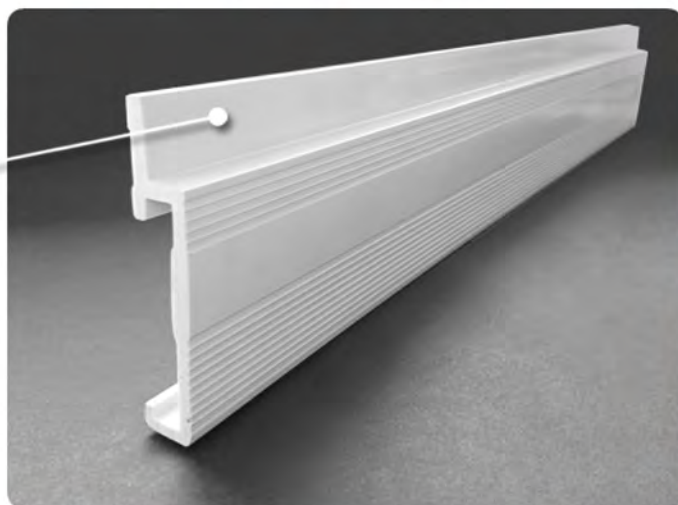
**PT-037**



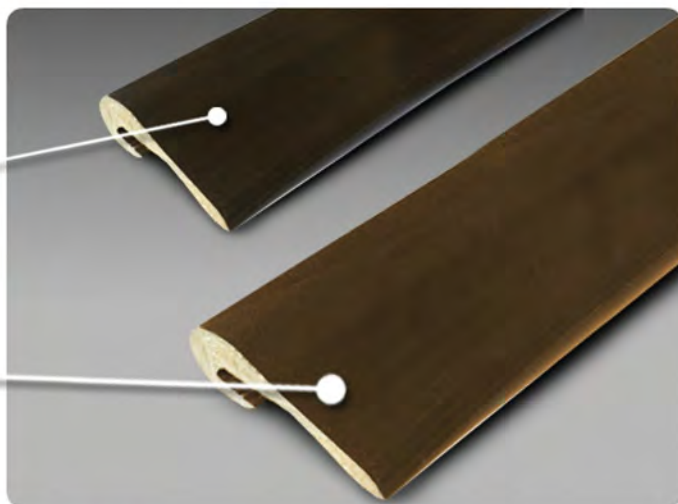
**PT-037**



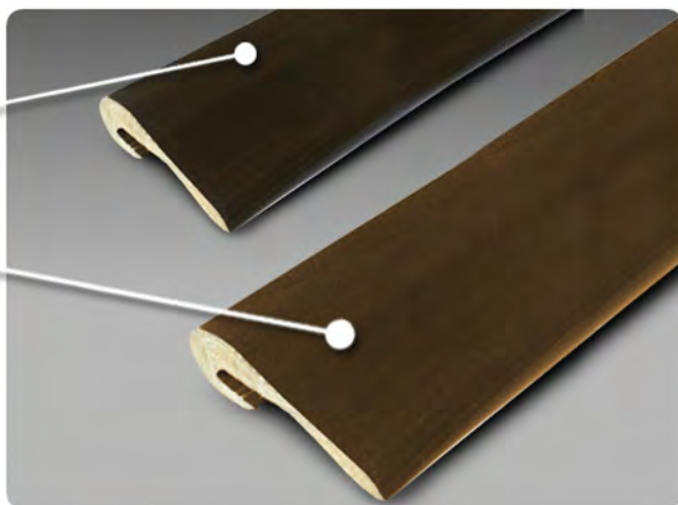
# ZASTOSOWANIE PROFILI



**PT-024**



**PT-016**



**PT-016**



# KĄTOWNIKI





# KĄTOWNIKI



## ROZMIAR



a x b mm

## DOSTĘPNE KOLORY

a x b mm	01	02	03	04	05	06	07	08	09	10	11	12	13	14
10 x 10 mm	X	X	X	X	X	X	X	X	X	X	X	X	X	X
20 x 10 mm	X	X	X	X	X	X	X	X	X	X	X	X	X	X
25 x 15 mm	X	X	X	X	X	X	X	X	X	X	X	X	X	X
15 x 15 mm	X	X	X	X	X	X	X	X	X	X	X	X	X	X
20 x 20 mm	X	X	X	X	X	X	X	X	X	X	X	X	X	X
25 x 25 mm	X	X	X	X	X	X	X	X	X	X	X	X	X	X
30 x 30 mm	X	X	X	X	X	X	X	X	X	X	X	X	X	X
40 x 40 mm	X	X	X	X	X	X	X	X	X	X	X	X	X	X
50 x 50 mm	X	X	X	X	X	X	X	X	X	X	X	X	X	X

## rodzaje kolorów



NR. 01  
BUK JASNY



NR. 02  
BUK RÓŻOWY



NR. 03  
BUK CIEMNY



NR. 04  
DĄB CZERWONY



NR. 05  
DĄB DWORKOWY



NR. 06  
DĄB NATURALNY



NR. 07  
MAHOŃ



NR. 08  
DĄB ANTYCZNY



NR. 09  
ORZECH GRECKI



NR. 11  
WISNIA



NR. 12  
DĄB RUSTYKALNY



NR. 13  
JESION SZARY



NR. 14  
BIAŁY







**ZAKŁAD  
BUDOWY MASZYN**  
I SYSTEMÓW STEROWANIA

## Zakład Budowy Maszyn

i Systemów Sterowania Kuczmierczyk Mariusz

43-330 Stara Wieś  
ul. Działkowa 7



tel. +48 (33) 845 91 40



biuro@budowamaszyn.ig.pl

[www.budowamaszyn.ig.pl](http://www.budowamaszyn.ig.pl)